

Porta Westfalica November 2010

All glass panels with decorative applications

Rodenberg focuses on modern finishing techniques



The opportunities of further processing and refining glass have by no means been fully exploited yet. This shows the design of doors with artfully produced all glass panels out of Rodenberg's own glass production. Elaborately finished applications, color coated sandblasted glasses, as well as the combination of different finishing techniques reflect the rich diversity of glass and its enormous creative

potential impressively.

Diversity of design by innovative finishing techniques

In the refinement of all glass door panels new and approved techniques can be combined outstandingly. Color lacquered or screen process coated glasses harmonize, for example, perfectly with sandblasted motives. 15 attractive panel variations prove this. The refining of matted, sandblasted glasses by a colored coating also opens up a variety of creation possibilities where subfields of the glass are dyed by hand in a subtle grey tone. The grey-matted motives are opaque,

Rodenberg
Türsysteme AG
Osterkamp 3
D-32457 Porta Westfalica

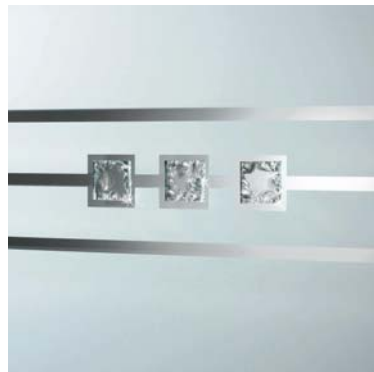
Tel.: +49 5731/768-0
Fax: +49 5731/768-180

info@rodenbergmail.de
www.rodenberg.ag

Blatt 2

however, their translucent quality and the character of matted glass remain.

Refined with hammer and chisel



From discreet to very expressive: Decorative applications in different forms, colors and materials integrate themselves perfectly into all glass panels of Rodenberg. They set unusual accents and give every entrance area an especially elegant look. A good example of this is the combination with hand-chiseled glass stones. In this fine art of glass refining the surfaces of each single glass element are worked on with hammer and chisel by hand and are thus formed distinctively. Thus, a diversity of shell-like surface structures originate which break the occurring light brilliantly. Every single glass stone is therefore a one of a kind stone with fascinating light effects.

Black glass applications set accents



Those who prefer colored accents can express this by panels with noble applications from black dyed stained glass. The 4-mm-glass applications get their special look by the artful treatment of the glass edges. These are grinded and polished at Rodenberg in additional operations to generate an striking depth effect as well as nice illumination effects in connection with matted glass. Beside

Rodenberg
Türsysteme AG
Osterkamp 3
D-32457 Porta Westfalica

Tel.: +49 5731/768-0
Fax: +49 5731/768-180

info@rodenbergmail.de
www.rodenberg.ag

Blatt 3

elaborate glass applications Rodenberg accounts for the creativity of front door buyers and offers refined matted all glass panels with accentuated applications from light resistant color foils, available in grey, green, blue and red.

Crystal glass stones make your entrance door sparkle

CRYSTALLIZED™ – *Swarovski Elements*, the brilliant crystal stones of Swarovski, sparkle in all colors and now also ennoble all glass panels in a unique manner. The pretty glass stones are made of especially multi-faceted polished crystal glass which reflects the occurring beams of light a hundred times. In combination with matted glass the small crystals sparkle and shine inside the pane – one brighter than the other. Thus they lend every entrance area a touch of luxury and exclusivity.

Effectively combined with applications in stainless steel look



More than 15 panel variations show the wide variety of combinations for glass with filigree or striking applications in stainless steel look. These aluminium elements made by laser technology receive a special surface refining. The results are applications with an especially fine impression resembling real stainless steel so well that the difference is not

recognizable with the naked eye. No matter, which model the customer selects: All glass panels of Rodenberg distinguish themselves by absolutely smooth and therefore really easy-to-clean surfaces, because the glass refined by applications lies well-protected in the space between the panes of double glazing or triple glazing.

Rodenberg
Türsysteme AG
Osterkamp 3
D-32457 Porta Westfalica

Tel.: +49 5731/768-0
Fax: +49 5731/768-180

info@rodenbergmail.de
www.rodenberg.ag